



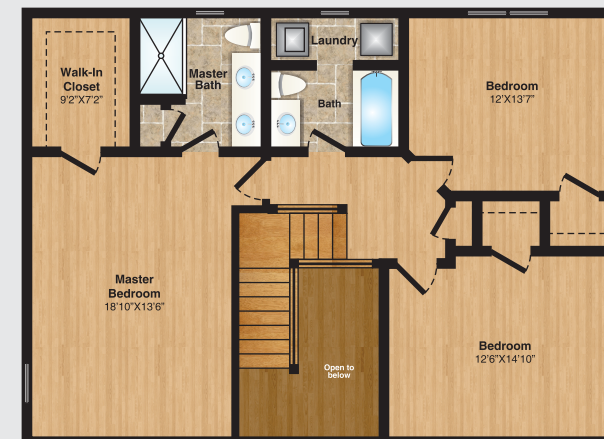
LAURENTIDE GLEN



The Westfield • Bristol, Connecticut



First Floor



Second Floor

- The Westfield – 2201 SF
- 9 ft first floor ceilings
- Grand Foyer Entrance
- Open floor plan
- Walk-in closet
- Gas fireplace

- Hardwood floors throughout
- Granite countertops
- GE appliances
- Central Air
- Moen plumbing fixtures
- Attached 2-car garage

- Fabuwood cabinets
- Optional kitchen island
- Tile in the bathrooms/backsplash in kitchen
- Options for a fourth bedroom on first floor



COLDWELL BANKER
NEW HOMES

For more information, contact

Jenna Talbot

860-937-7488 Cell

Coldwell Banker Realty

South Windsor Office 860-648-5600

LaurentideGlen.com

TradeMark
Acquisitions, LLC



Although all illustrations, specifications and dimensions are believed correct at the time of publication, accuracy cannot be guaranteed. The right is reserved to make changes without notice or obligation. Windows, doors and ceilings may vary on the options and elevations selected. Optional items indicated are available at additional cost. This brochure is for illustrative purposes only and not part of a legal contract. See Sales Representative for details. Coldwell Banker has Ownership of all Artwork including original digital files as well as preliminary designs. Artwork cannot be used without written permission of Coldwell Banker.